

FINE ART & EUROPEAN DECORATIVE ARTS GO UP FOR BID AT TURNER AUCTIONS + APPRAISALS ON SATURDAY, APRIL 25

Online Auction Features over 275 lots from Multiple Collectors & Estates

SOUTH SAN FRANCISCO, CA, APRIL 2, 2020 – Turner Auctions + Appraisals is pleased to present Fine Art & European Decorative Arts on Saturday, April 25, 2020. Featuring over 275 lots, this online auction offers an array of American and European paintings, prints, ceramics, lithographs and more. Among the artists are Ed Ruscha, Grant Wood, David James Gilhooly, Douglas Bond and Christopher Gerlach. The wide selection of European decorative arts come from Meissen, Wedgwood, Royal Doulton, Sitzendorf, Royal Vienna, Herend, Havilland, and other continental or porcelain manufacturers. Among these items in the sale are bowls, vases, candelabra, platters, centerpieces, figures and figural groupings, brooches, art glass, decanter sets, busts, jewelry boxes, Italian majolica, a Vienna charger, and Russian lacquerware. There are also a number of items from Asia: from Japan are several Japanese woodblock prints, including Masami Teraoka, porcelain plaques and bronze vases; from China are cloisonné, porcelain Quan Yin figures and snuff bottles; from Thailand are framed embroideries. Completing the sale are several groups of American Indian books.



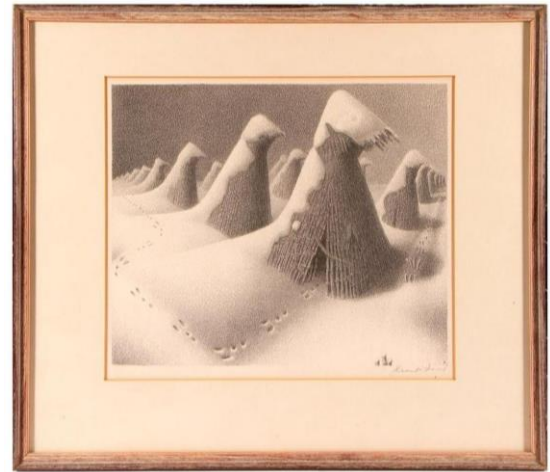
Turner Auctions + Appraisals begins its online auction on Saturday, April

25, 2020, at 10:30 am PST; sale items are available for preview and bidding now. The auction will be featured live on multiple platforms: LiveAuctioneers, Invaluable, Bidsquare, iCollector, and Turner Auctions + Appraisals' free mobile app, which can be downloaded from the App Store or Google Apps ("Turner Auctions"). All are easily accessed through 'Upcoming Auctions' at the company's website: www.turnerauctionsonline.com/upcoming-auctions/.



Here are some highlights of the upcoming sale (see details in the online catalog):

Lot 88: Grant Wood (1891-1942). Title/Subject: "January".
Signature: "Grant Wood" lower right in pencil. Medium:
Lithograph. Size image: 9 1/2" x 12 1/4". Size frame: 14 3/4" x
18 1/2". Created: 1938. Condition: Some toning. Estimate
\$2,000 - \$3,000. (Photo, top right)



Lot 40: A Marble and Gilt Metal Center Bowl. A continental
marble and gilt metal center bowl with garlands and
figureheads. H- 9" W -16" D- 16". Condition: Good.
Estimate \$700 - \$900. (Photo, top left)



Lot 77: David James Gilhooly (1943 - 2013).

Title/Subject: Frog on Kaiser Roll. Signature:
Signed and Dated. Medium: Ceramic. Size: 6.00" x
4.50" x 4.50".
Created: 1982.
Condition: Good.
Estimate \$1,000 -
\$2,000. (Photo,
middle right)

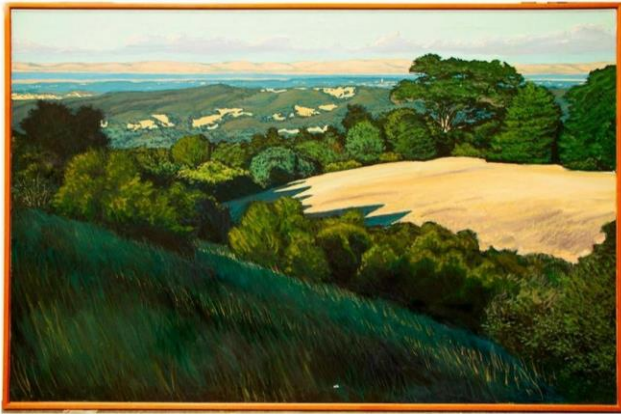


**Lot 80: Masami TERAOKA
(1936).** Title/Subject:

Namiyo at Hanauma Bay,
1985. Medium: Print-
Multiple, Lithograph in
colors. Size image: 24 3/4"
x 36". Size frame: 34" x 45". Created: 1985. Condition:
Good. Estimate \$1,500 - \$2,500.
(Photo, lower left)

Lot 56: A Rare Wedgwood Yellow Jasperware Bowl.
Measuring 7 1/2 inches high x 12 diameter. Estimate
\$400 - \$600. (Photo, bottom right)





Lot 72: Christopher Gerlach (Born 1952). Title/Subject: "Afternoon Shadows: Woodside. Signature: Lower right. Medium: Oil on canvas. Size image: 48" x 72" Created: 1987. Condition: Overall good, small hole lower center. Estimate \$1,500 - \$2,500. (Photo, top left)

Amazon warriors and nymphs. Dia. - 23 1/2" Condition: Good. Estimate \$300 - \$500. (Photo, top right)



Lot 49: A finely carved 18th-Century Continental Santo, probably Italian, measuring 8 1/2 inches high x 5 1/2 wide x 4 deep. Estimate \$400 - \$600. (Photo, middle left)

Lot 44: Gilt Metal Andirons. A pair of large and impressive gilt bronze and brass fireplace guard andirons. H - 22" W - 14" D - 7 1/2 ". Condition: Good. Estimate \$700 - \$900. (Photo, middle right)



Lot 76: Douglas Bond (Born 1937). Title/Subject: Untitled (Green Bedroom). Signature: Signed on Reverse. Medium: Acrylic on canvas. Size image: 37" x 39" Size frame: 37 1/2" x 39 1/2". Created: 1972/73.

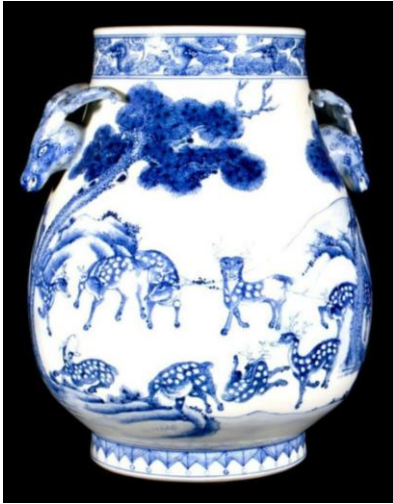
Condition: Very good. Estimate \$2,000 - \$3,000. (Photo, bottom right)



Lot 110: A Continental Porcelain Nodder Pagoda Figure with articulated hands and head and crossed sword mark. H - 11" x W - 11" D - 11". Condition: Good. Estimate \$400 - \$600. (Photo, bottom left)



Lot 234: A Chinese Blue and White Porcelain Vase measuring 12 inches high x 9 diameter. Estimate \$500 - \$700. (Photo, below)



-- Previous Photos --

Lot 75: Ed Ruscha (Born 1937). Title/Subject: Coyote, 1989. Signature: Lower right. Medium: Lithograph. Size image: 36" x 27". Size frame: Created: 1989 Condition: Very good. Estimate \$6,000 - \$8,000. (Photo, top right, page 1)

Lot 113: A Meissen Porcelain Platter with a Royal Scene. A very finely painted platter depicting the Royal procession of Louis XIV through the Tuileries in 1662. The Meissen blue sword mark has one scratch indicating the painting was executed elsewhere. W - 19 3/4 " DS - 14 ". Condition: Good. Estimate \$800 - \$1,200. (Photo, lower left, page 1)

###

ABOUT TURNER AUCTIONS + APPRAISALS

Based in South San Francisco, Turner Auctions + Appraisals was founded by Stephen Turner to expand and complement the capabilities of Stephen G. Turner Associates, an auction and appraisal consulting firm founded in 2004. Turner Auctions + Appraisals presents online auctions in diverse categories of personal property (www.turnerauctionsonline.com). Among them are Fine Arts, Decorative Arts, Asian Arts, Toys, Jewelry, Militaria, Ethnic Arts and others. The company offers a range of auction and appraisal services for buyers, sellers and collectors. Online auctions are held several times a month. Working with leading live and online auction houses on the West Coast since 1991, Turner is a professional appraiser of personal property and seasoned auctioneer. His areas of expertise include fine art, decorative arts, antiques & residential contents. The company welcomes consignments and appraisals.

For more information about the company, please contact:

Stephen Turner, President, Turner Auctions + Appraisals
461 Littlefield Avenue, South San Francisco, CA 94080
415-964-5250 / sturner@turnerauctionsonline.com / www.turnerauctionsonline.com

For media inquiries or photos, please contact:

Jill Turner, Rodin & Shelley Associates
707-944-2433 / jillturnerpr@gmail.com